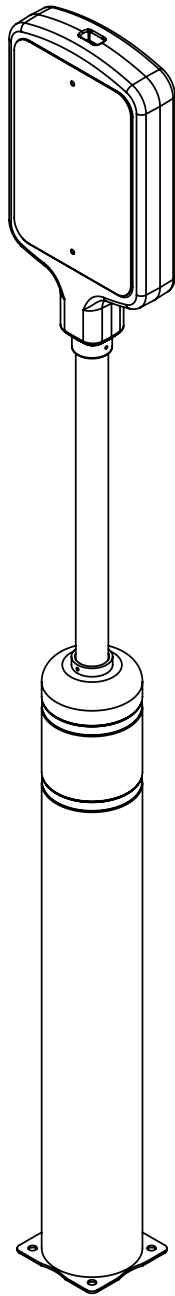
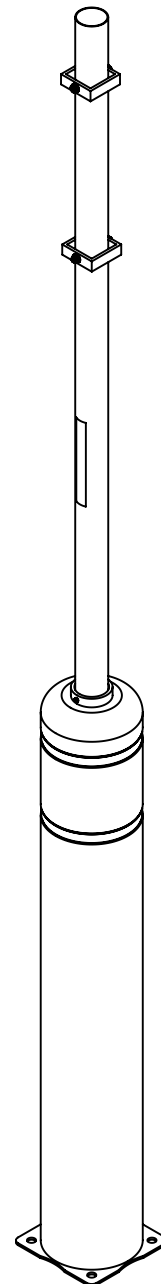


BumperSign FlexPost

Installation Instructions



BSFP-K-108T-A-###



BSFP-K-108-A-###



McCue Corporation

Danvers, Massachusetts, USA
+1(800) 800 8503
cservices@mccue.com

McCue UK

Milton Keynes, United Kingdom
+44 (0)1908 365 511
uksales@mccue.com

McCue Asia

Xiamen, Fujian, China
+8 592 2200790
rchen@mccue.com

McCue Europe

Magirus-Deutz-Straße 14
89077 Ulm, Germany
+49 731 40 38 82 68
eusales@mccue.com

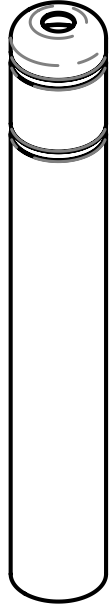
mccue.com



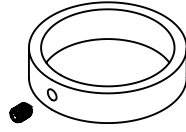
Components



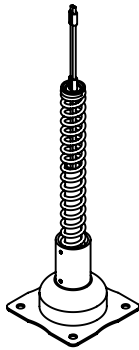
RE-XL-9P-M



BSFP-CVR-###

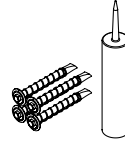


RE-XL-CK



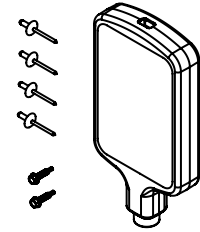
A-XL-SK

Asphalt Installation



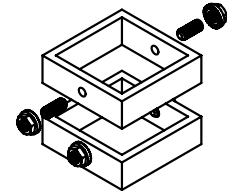
HW-C-A-A58 &
CS-FASTPACK-KIT

For BSFP-K-108T-A-### Installation



BS-K-TOP-###

For BSFP-K-108-A-### Installation



RE-XL-SB

Concrete Installation



HW-K-C-A12-O

Required Tools

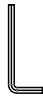
For Asphalt Installation



6 Point Socket
9/16" Socket



Socket
Extension



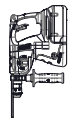
3/16" Allen
Wrench



Vacuum



7/8"
Drill Bit



Hammer
Drill



Drill



3/16"
Drill Bit



Marker/
Wax Pencil



Hand
Riveter



Ratchet
Wrench



Caulk
Gun



Mallet

For Concrete Installation



6 Point Socket
3/4" Socket



Socket
Extension



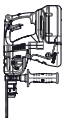
Impact Drill



3/16" Allen
Wrench



1/2"
Drill Bit



Hammer
Drill



Marker/Wax Pencil



Vacuum



McCue

Asphalt Anchoring

⚠ IMPORTANT: WEAR SAFETY GLASSES • CHECK UNDERGROUND FACILITIES



Do not place within 10" of any curb.



Mark 4 holes.



Mark your drill bit at 6".



Drill 4 holes 7/8" diameter 6" deep.



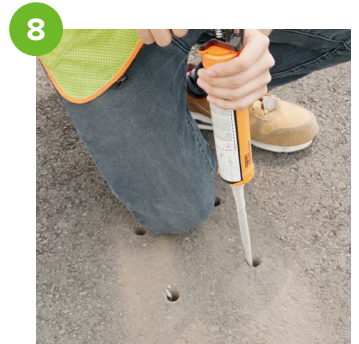
Clear away any dust or debris.



Dispense adhesive onto cardboard until the bead flows evenly.



Insert nozzle and fill each hole to 1" below floor level with adhesive.



Repeat for all drilled holes, keeping adhesive level consistent.



Insert anchors into hole by hand.



Using a rubber mallet, tap anchors into the holes until flush.



With a damp cloth, wipe away any excess.



Using 9/16" ratchet, tighten anchors.



McCue

Concrete Anchoring

⚠ IMPORTANT NOTES:



Spring should appear curved.
Do not cut wire.

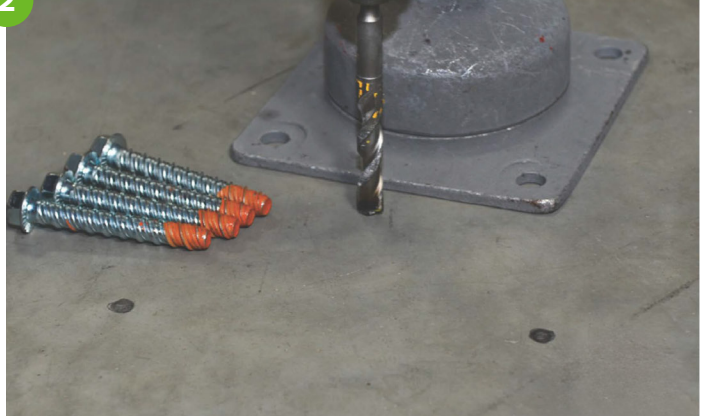
Must install base at least
10" from any curb.

1



Place base plate in desired anchoring location.
Mark the 4 base holes with a marker or wax pencil.

2



Using a 1/2" masonry bit, drill 5" in depth.

3



Place the base plate over the 4 holes and use a socket wrench
or high speed drill with a 3/4" drive to thread all 4 bolts.

4



Tighten all 4 bolts so the base plate is flush
with the concrete.

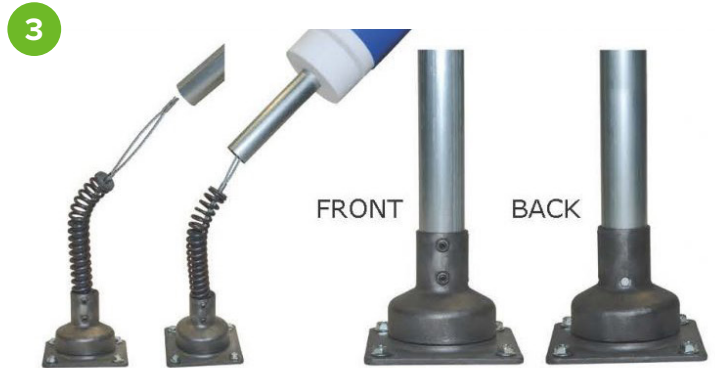
Sign Post and Bollard Cover Installation



1
Slide collar halfway up the post.
Do not tighten, you will need to re-adjust later.



2
Slide foam rings
5" up the post.



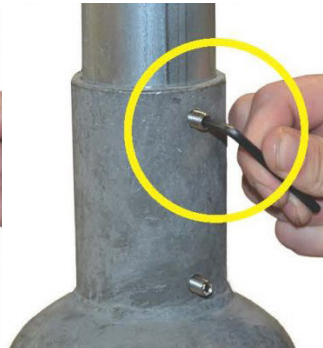
3
Foam ring side down, insert the post on to the base.
Rotate clockwise while sliding the post down until it is fully seated at the bottom.



4
Make sure the post is fully visible in the back window of the base.



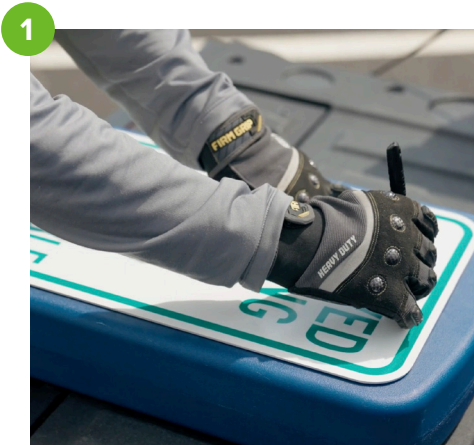
5
Using the cone point set screw and allen wrench, pierce the pipe with this set screw for post retention.



6
With the collar flush with the top of the bollard, tighten the set screw with the provided allen wrench.

You will need to reset this after an impact.

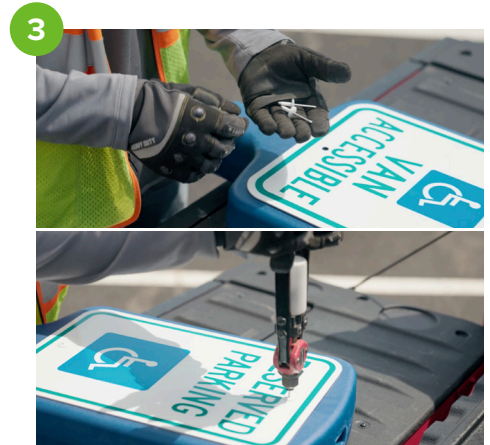
2-Sided Sign Topper Installation



Center the placard on top of the molded shell and mark the hole locations with a marker.



Using a drill and a 3/16" drill bit, drill holes where you marked.



Align the placard over the drilled holes. Insert the rivets and use a hand riveter to fasten the placard in place.

REPEAT STEPS 1-3 FOR THE OPPOSITE SIDE OF THE SIGN BEFORE CONTINUING



Slide the fully assembled 2-sided sign topper on to the post.



Secure the 2-sided sign topper to the post with the provided screws.

Ensure both sides are fully fastened.



McCue

Placard Sign Installation

1



Slide the square brackets on to the post and loosely tighten the set screws with a 5/32" hex bit to hold them in place.

2



Align the placard and place it over the brackets and screws.

3

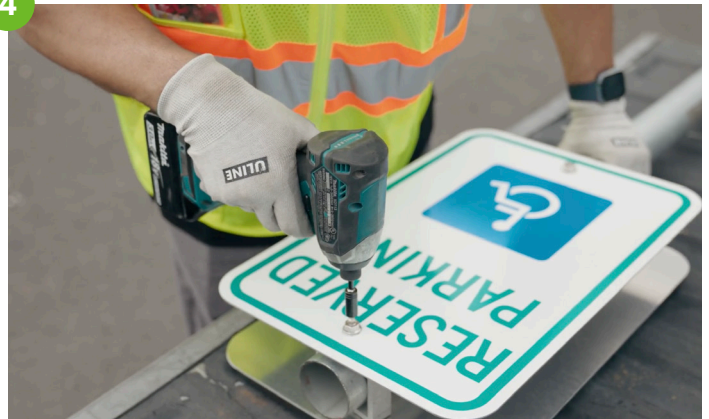


Align the sign to the top of the post, then firmly tighten the set screws.

Next, insert the bolts into the threaded set screws and hand-tighten to hold the sign in place.

Repeat for the opposite side.

4



Use a drill with a 1/2" socket to full tighten the bolts and securely fasten the sign in place.